



Exposure Units

GLUNZ & JENSEN 



work positive

ROBUST. RELIABLE. TRUSTED.

For more than 40 years Glunz & Jensen has been world's leading and most trusted provider of equipment and solutions for the global prepress industry.

We invest heavily in simpler and more efficient technologies to help drive profitability and productivity for our flexo customers.

We are developing fully automated, integrated systems that improve process optimisation and deliver more accurate, faster results with less manpower, lower operating costs and with no risk of costly human error.

We produce complete flexographic prepress solutions for all flexo plates in the market, while having the largest installed base of flexo processing equipment in the world.

Our family of exposure systems is the most successful equipment on the market. Well-proven technology, in combination with innovative ideas provide high UV output characteristics and consistent plate quality.

302 ECDLF 305 EC/ECDLF

The 302 and 305 lines of flexo plate exposure units are the most prominent exposure platforms on the market. It supports plate sizes up to 920 x 1200 mm (36.2 x 47.2") and features a cooled exposure bed, lamp cooling, a light integrator and the latest generation PLC controls.

The 302/305 is available in various configurations ranging from exposure with cooled bed (EC) to complete solutions with integrated dryer (4 drawers) and light finisher (ECDLF). In addition, the 305 version is equipped with automatic top lid opening/closing for convenient ergonomics.



401 EC/ECLF

The 401 series is our medium size exposure unit, supporting flexo plate sizes up to 1200 x 1600 mm (47 x 63").

The 401 series comes with cooled bed, lamp cooling, light integrator and PLC control. With the automatic top lid opening/closing as a standard feature, you can choose between the EC model (exposure + cooled bed) and the ECLF model with integrated light finishing function.



501 EC/ETL

The 501 series is our largest exposure platform, for flexo plate sizes up to 1320 x 2030 mm (52 x 80") plate sizes.

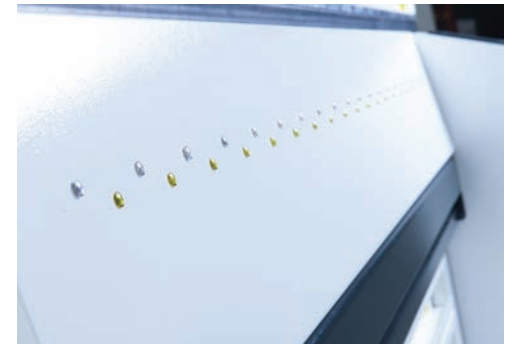
The 501 series includes cooled bed, lamp cooling, light integrator and PLC control. Automated top lid opening/closing is a standard feature. You can choose between the EC model (exposure + cooled bed), or the ETL model with vertical top lift for more convenient access with large plate handling.





Fast and easy access for maintenance operations: Main components are conveniently located in drawers and the inside top lid.

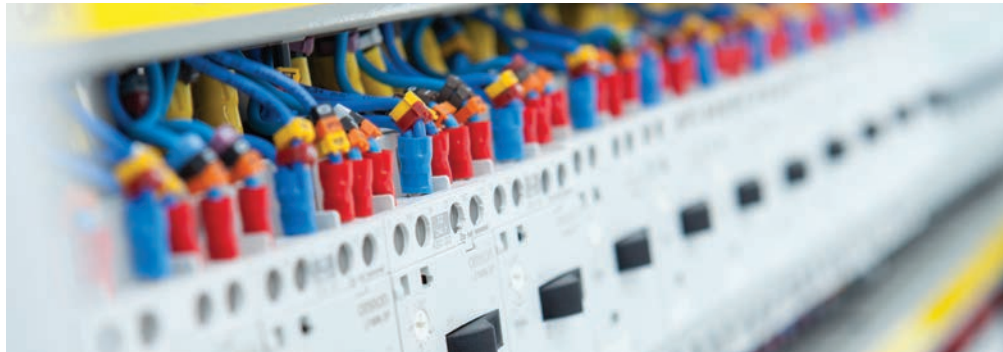
High power UV lamps provide short exposure intervals with consistent results.



Quick visual function status of UV lamp operation.



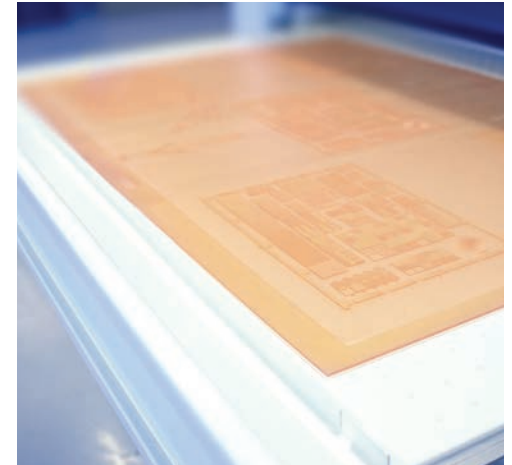
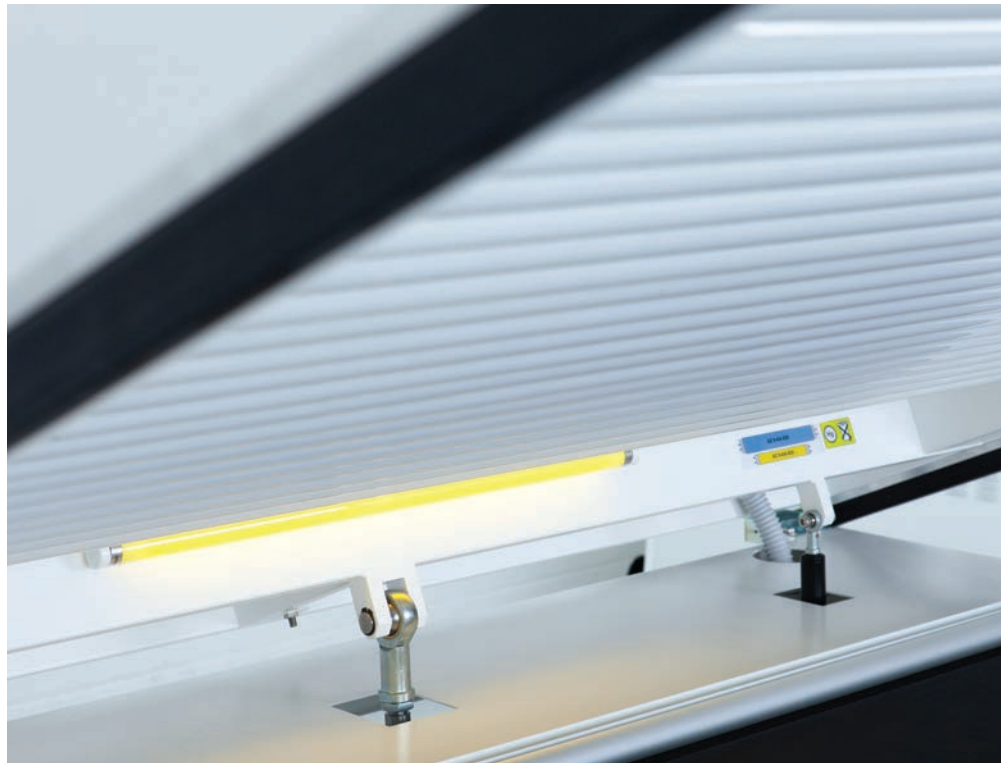
Consistent exposure quality is achieved by precise control of all relevant processing parameters such as lamp temperature, UV exposure time, temperature of exposure surface, UV output etc.



Industrial grade electrical controls, with standardized components for high reliability.



Easily accessible drawers for drying and light finishing processes.



Convenient ergonomics and increased productivity with automated pneumatic top lid opening and closing; model dependent.



Exposure Units				
MODEL	302 ECDLF	305 EC/ECDLF	401 EC/ECLF	501 EC/ETL
PERFORMANCE				
Max. plate size	920 x 1200 mm (36.2 x 47.2")	1200 x 1600 mm (47 x 63")		1320 x 2030 mm (52 x 80")
Max. plate thickness	6,35 mm (0.25")			
CONSUMPTION				
Power consumption (US)	3W+N+PE, 400VAC (3W + PE, 230VAC)			
Power supply (US)	3 x 15 A, 50-60 Hz (3 x 28 A, 50-60 Hz)	EC: 8 A, 50-60 Hz - (14 A, 50-60 Hz) ECLF: 15 A, 50-60 Hz - (25 A, 50-60 Hz)	16 A, 50-60 Hz (27 A, 50-60 Hz)	
Air extraction lightfinisher	800 m ³ /hr			NA
Exhaust connection, lightfinisher	140 mm	160 mm	NA	
GENERAL				
Dimensions (WxLxH)	1800 x 1550 x 1125 mm	1940 x 1840 x 1060 mm	2600 x 1800 x 1100 mm (102.3 x 70.8 x 43.3")	EC: 3360 x 2110 x 1060 mm (132,2 x 83 x 41.7") ETL: 3050 x 2210 x 1190 mm (120 x 87 x 46.8")
Weight, equipment	650 kg (1433 lbs)	720 kg (1587 lbs)	1000 kg (2204 lbs)	EC: 1200 kg (2645 lbs) / ETL: 1400 kg (3086 lbs)

Note: Specifications are subject to changes without prior notice.

Unique exceptional service for customers worldwide

In both a technical and operational capacity, Glunz & Jensen delivers exceptional customer care through the industry's strongest global after sales service. Fast, reliable and professional, you can depend on us for the right level of support when and where you need it, from training and installation to preventive maintenance and reliable spare parts delivery.

We are also building a comprehensive support network that provides a complete range of essential on-site services.

We offer break/fix assistance, preventive maintenance programs and cleaning for any graphic equipment. We cover any kind of prepress equipment within flexo and offset - even finishing equipment, including non-Glunz & Jensen products.

We can even offer our services as an extension of your own business, something that is especially useful for our major customers who are looking to improve the scope of their own support organisation.

Local access to qualified service and spare parts worldwide



Glunz & Jensen (Headquarters)
Selandia Park 1
4100 Ringsted, Denmark
+45 5768 8181
gj@glunz-jensen.com

Glunz & Jensen s.r.o.
Kosicka 50
08001 Presov, Slovakia
+421 51 7563 811
skpr@glunz-jensen.com

Glunz & Jensen Inc.
2185 Hwy. 292
Inman, SC 29349, USA
+1 864 568 4638
gj-americas@glunz-jensen.com