



305-505
DW/XP

GLUNZ & JENSEN 

GLUNZ & JENSEN  505 DW-XP

work positive

ROBUST. RELIABLE. TRUSTED.

For more than 45 years Glunz & Jensen has been world's leading and most trusted provider of equipment and solutions for the global prepress industry.

We invest heavily in simpler and more efficient technologies to help drive profitability and productivity for our flexo customers.

Glunz & Jensen is developing fully automated, integrated systems that improve process optimisation and deliver more accurate, faster results with less manpower, lower operating costs and with no risk of costly human error.

We produce complete flexographic prepress solutions for all flexo plates in the market, while having the largest installed base of flexo processing equipment in the world.

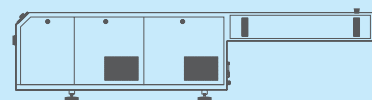
The latest DW series is the ultimate processing experience in terms of processing quality and stability, comprising high productivity processors with a separate pre-wash section for black mask removal and efficient rinse/wiping function.

The DW series fulfills the highest expectations for even the most demanding print jobs on a daily basis.

305 P

305 P is the right option for customers who look for an economical processing solution with small footprint in the mid-range size.

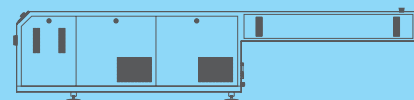
Comprised of rotating and oscillating brushes, touch screen display, integrated solvent temperature and viscosity controls, it is capable of processing plates with or without black mask.



405-505 DW

The DW series is equipped with an additional Digital Wash section to remove the black mask layer from the printing plate. This separates the black mask particles from the main wash tank and provides easier processor cleaning and wider processing latitude for your plates.

The DW series is equipped with rotating and oscillating brushes, touch screen display, integrated solvent temperature and fully automatic viscosity controls for optimal wash-out results.

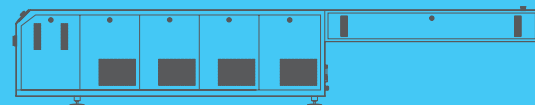


505 DW-XP

Based on the extremely successful DW family, the 505 DW-XP is equipped with additional wash-out brushes and the ability to process plates in incremental and batch modes.

This makes 505 DW-XP the fastest processing solution in the world. 505 DW-XP offers all other well-proven features such as Digital Wash section, rotating and oscillating brushes, touch screen display, integrated solvent temperature and fully automatic viscosity controls.

The 505 DW-XP is your preferred solution, if you are looking for maximum productivity, along with excellent processing quality and workflow flexibility.





PLC controlled operations functions and monitoring of the unit. Standardised modules and worldwide electrical configurations.



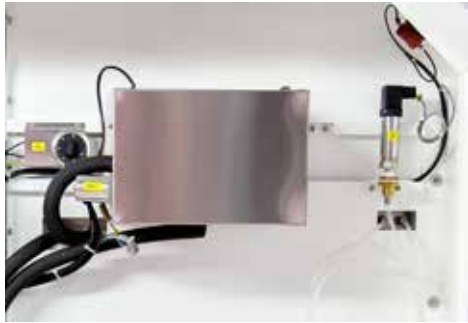
Solvent distribution trays provide even flow across the brushes for effective plate washing.



Dual wash-out tank for digital flexo plates: Digital wash section for black mask removal is separated from the main solvent tank for easier maintenance and perfect wash-out results.



User friendly colour touch screen for setup and control of all operations and parameters. Displays a schematic layout of the processor for service, access and troubleshooting.



Fully automated temperature and viscosity controls: For consistent and high quality processing results.

Maximum speed optimisation

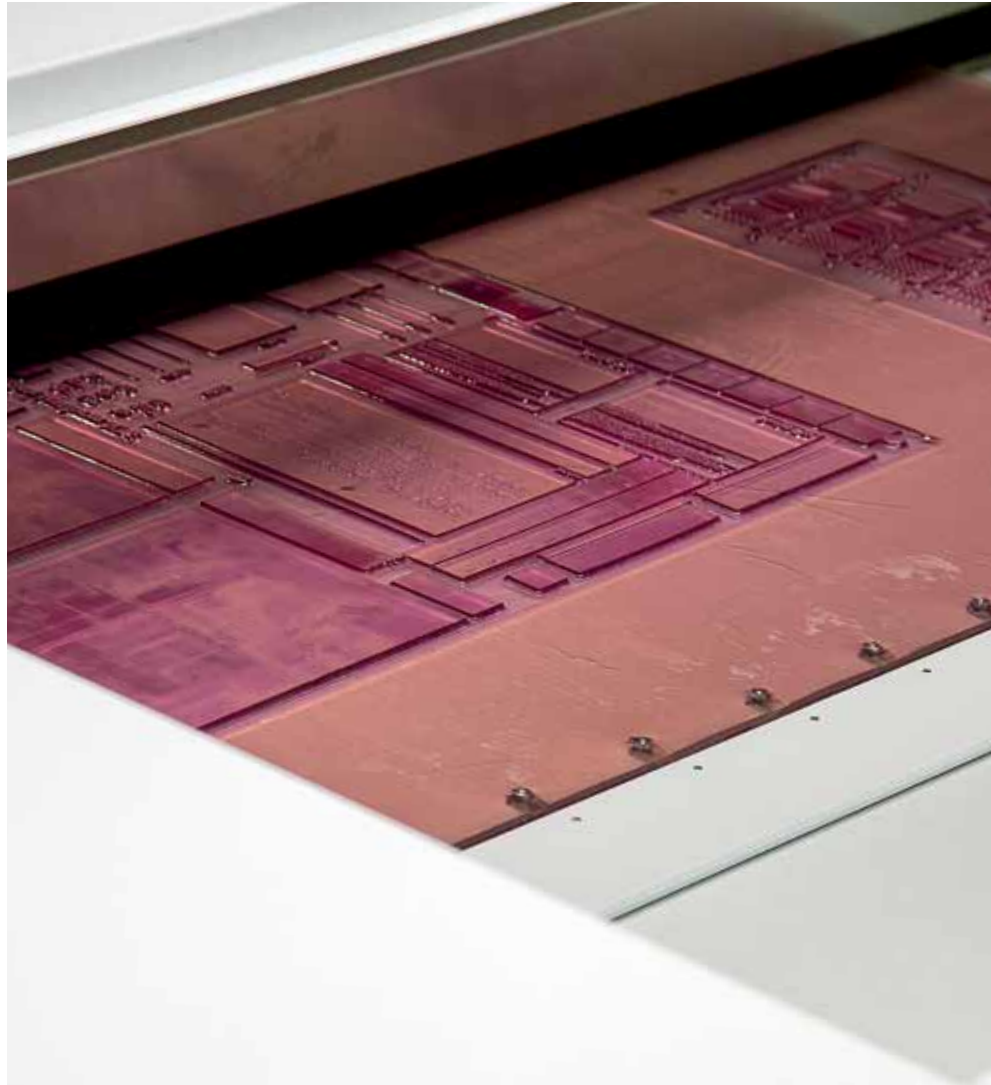
Batch mode: Fast and time optimised for single plate washout. (520 DW- XP only)

Incremental mode: Time optimisation for continuous plate processing.



Fast and easy access for cleaning and maintenance operations:

Pumps, motors, drive mechanics are conveniently located on the side.



Perfect plate wash-out with contra-rotating brushes. Oscillating brush movement in opposing directions.

Processors

MODEL	305 P	305 DW	405 DW	505 DW	505 DW-XP
PERFORMANCE					
Max. Plate size	920 x 1200mm (36 x 47")	920 x 1200mm (36 x 47")	1200 x 1600mm (47 x 63")	1320 x 2032mm (52 x 80")	1320 x 2032mm (52 x 80")
Min. Plate width	210mm (8.2")	210mm (8.2")	210mm (8.2")	210mm (8.2")	210mm (8.2")
Min. Plate length	297mm (11.7")	297mm (11.7")	297mm (11.7")	297mm (11.7")	297mm (11.7")
Max. Plate thickness	Up to 7mm (0.27")	Up to 7mm (0.27")	Up to 7mm (0.27")	Up to 7mm (0.27")	Up to 7mm (0.27")
CONSUMPTION					
Power Consumption	6500W	8500W	8500W	8500W	10000W
Power Supply	3W+N+PE, 400VAC 3W+PE, 230VAC	3W+N+PE, 400VAC 3W+PE, 230VAC	3W+N+PE, 400VAC 3W+PE, 230VAC	3W+N+PE, 400VAC 3W+PE, 230VAC	3W+N+PE, 400VAC 3W+PE, 230VAC
Air Extraction	600m³/hr	600m³/hr	600m³/hr	600m³/hr	600m³/hr
Exhaust Connection	140mm (5.5")	140mm (5.5")	140mm (5.5")	140mm (5.5")	140mm (5.5")
Compressed Air	6 bar (87 psi)	6 bar (87 psi)	6 bar (87 psi)	6 bar (87 psi)	6 bar (87 psi)
GENERAL					
Dimensions (WxLxH) and Weight, Equipment	1680 x 3350 x 970mm (66.1 x 131.9 x 38.2") 1000kg (2205 lbs)	1680 x 3686 x 970mm (66.1 x 145.1 x 38.2") 1130kg (2491 lbs)	1960 x 4150 x 970mm (77.2 x 163.4 x 38.2") 1300kg (2866 lbs)	2080 x 4450 x 970mm (81.8 x 175.2 x 38.2") 1400kg (3087 lbs)	2150 x 6230 x 1070mm (84.6 x 245.3 x 42.1") 1730kg (3814 lbs)
Dimensions (WxLxH) and Weight incl. Crate	1870 x 2290 x 1750 mm (73.6 x 90.2 x 68.9") 1275kg (2811 lbs)	1870 x 2230 x 1760mm (73.6 x 87.8 x 69.3") 1427kg (3146 lbs)	2220 x 2730 x 1750mm (87.4 x 107.5 x 68.9") 1585kg (3495 lbs)	2280 x 2730 x 1740mm (89.8 x 107.5 x 68.5") 1690kg (3726 lbs)	2320 x 4380 x 1740mm (91.3 x 172.4 x 68.5") 2270kg (5005 lbs)
TANK CAPACITIES					
Main solvent tank	118 ltrs (31.2 US gal)	151 ltrs (39.9 US gal)	169 ltrs (44.7 US gal)	335 ltrs (88.6 US gal)	335 ltrs (88.6 US gal)
Digital section	38 ltrs (10.0 US gal)	40 ltrs (10.6 US gal)	40 ltrs (10.6 US gal)	73 ltrs (19.3 US gal)	73 ltrs (19.3 US gal)
Cooling water tank	6 ltrs (1.6 US gal)	6 ltrs (1.6 US gal)	6 ltrs (1.6 US gal)	6 ltrs (1.6 US gal)	6 ltrs (1.6 US gal)

Note: Specifications are subject to changes without prior notice.

Learn more about
305-505 DW XP
by scanning this
QR code.



Stay updated!
Follow
Glunz & Jensen



Glunz & Jensen (Headquarters)
Lindholm Havnevej 29
DK-5800 Nyborg, Denmark
+45 5768 8181
gj@glunz-jensen.com

Glunz & Jensen (Italy)
Via Michelangelo Buonarroti, 6
20090 – Cesano Boscone (MI), Italy
+39 02 900 90 180
gj@glunz-jensen.com

Glunz & Jensen (Americas)
500 Commerce Drive
Quakertown, PA 18951, USA
+1 267 405 4000
gj-americas@glunz-jensen.com

GLUNZ & JENSEN 

www.glunz-jensen.com